



We are committed to providing the best support and training materials to our patients and their caregivers. The information below highlights the various virtual resources that you can use to find answers to questions and learn how to better use the Infinity Enteral Feeding Pump. Please visit [infinityfeedingpump.com](http://infinityfeedingpump.com) for additional information.

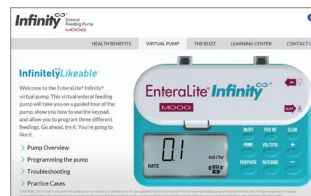
## Online Training Tools

Visit [infinityfeedingpump.com](http://infinityfeedingpump.com) to download PDF files, or click on the links below:

- [Infinity Quick Reference Guide](#) \*
- [Infinity Troubleshooting Guide](#) \*
- [Infinity Operator's Manual](#) \*\*
- [Infinity Actual Size Card \(Spanish Only\)](#)
- [Infinity Orange Quick Reference Guide](#)
- [Infinity Orange Troubleshooting Guide](#)
- [Infinity Orange Operator's Manual](#)
- [Infinity Orange Actual Size Card \(Spanish Only\)](#)

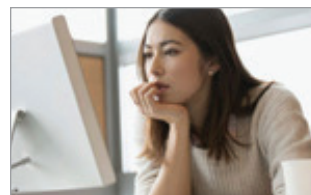
\* Available in Spanish

\*\* Available in French and Spanish



## Virtual Training Pump

Access the virtual Infinity pump via tablet or computer to learn the basics on how to use the pump. [Click to go to the virtual pump.](#)



## Training Videos

Videos to help viewers learn how to setup, program, clean, and troubleshooting the Infinity pump. [Click to go to the videos.](#)

Homecare Provider:

Homecare Provider Website:

Telephone Number:

My Representative:

My Representative's Telephone Number:

Additional Notes:



Speak live with a Moog Clinical Representative for pump questions and troubleshooting guidance 24 hours per day, 7 days per week.

Clinical & Customer Support **800.970.2337**  
Visit [infinityfeedingpump.com](http://infinityfeedingpump.com) for additional information

Infinity<sup>®</sup> and Infinity Orange<sup>®</sup> are registered trademarks of Zevox, Inc. Moog<sup>®</sup> is a registered trademark of Moog, Inc.  
© 2020 Moog, Inc. Moog Medical, 4314 Zevox Park Lane, Salt Lake City, UT 84123 USA. MD-80768 Rev. B

**MOOG**<sup>®</sup>  
Enhancing Healthcare.  
Enriching Lives.™