



## Feeding Plan

Fill bag  
with:

 mL

Rate:

 mL/hr

Dose:

 mL

Refill bag  
with:

 mL

Refill bag  
every:

 hours

Max. Hang  
Time:

 hours

## Additional Help & Resources

### Who to call

**For medical concerns or questions:** Please call the patient's medical team or his/her primary care provider.

**For supplies:** Contact your homecare provider to order supplies. Contact your homecare provider at the number below at least \_\_\_\_\_ days ahead so that you do not run out of supplies. Always keep an extra \_\_\_\_\_ days of supplies and formula on hand in case of emergency.

**Homecare Provider:**

**Telephone Number:**

### What if my pump alarms?

1. Read the message on screen and write it down.
2. Silence the alarm by pressing the **RUN/PAUSE** key.
3. Follow troubleshooting chart which can be found at [infinityfeedingpump.com](http://infinityfeedingpump.com) or in the user manual.
4. If pump still alarms, contact your homecare provider for additional assistance or Moog Customer Support at **800.970.2337**.

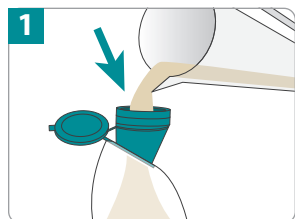
**Additional Notes:**

## Quick Reference Instructions

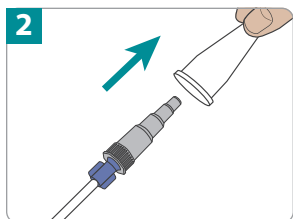
These instructions are not a substitute for the Operator's Manual. Be sure to read the Operator's Manual thoroughly prior to operating the pump. Additional information including interval programming can be found in the Operator's Manual.

### Priming and Loading the Disposable Set

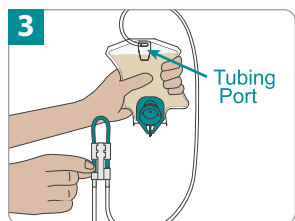
#### If using a backpack



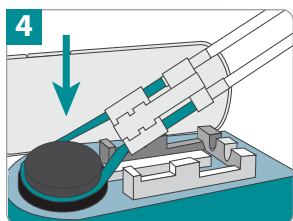
Hold the bag's funnel upright and pour in feeding formula. Close cap tightly.



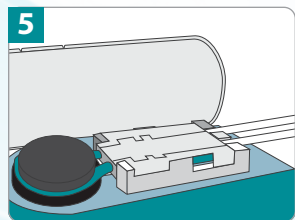
Remove protective cover from the feeding tube connector.



**Prime the set manually and remove air** by turning the bag upside down and tilting the bag to keep air at tubing port. Gently pinch teal colored tubing below the "💧" symbol. While pinching, gently squeeze the bag at the same time to assist fluid flow. Hold this position until formula reaches the feeding tube connector.



Loop the silicone tubing around the pump wheel stretching lightly.

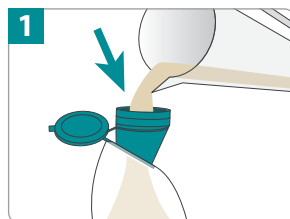


Seat cassette into the pump and close the door.

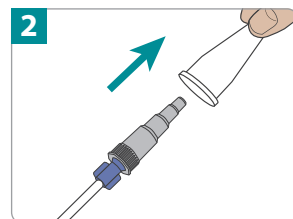


Place the pump into the backpack and secure with straps.

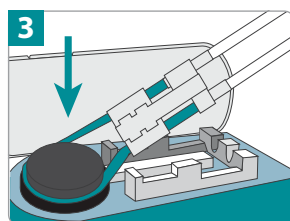
#### If using an IV pole



Hold the bag's funnel upright and pour in feeding formula. Close cap tightly and hang bag.

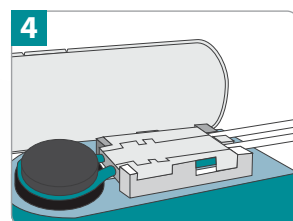


Remove protective cover from the feeding tube connector.

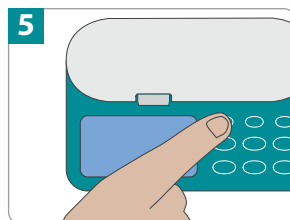


**If manually priming, skip to step 6. If using the pump to prime, continue through step 5:**

Loop the silicone tubing around the pump wheel stretching lightly.

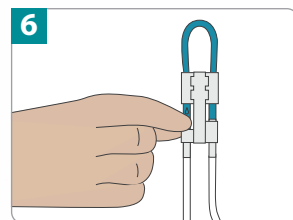


Seat cassette into the pump and close the door.



Turn pump on by pressing and holding the **ON/OFF** key until the pump beeps.

Then, press and hold the **PRIME** key until formula reaches the feeding tube connector.



**To manually prime**, gently pinch teal colored tubing below the "💧" symbol. While pinching, gently squeeze the bag at the same time to assist fluid flow. Hold this position until formula reaches the feeding tube connector.

**When primed, refer to steps 3 and 4 to load the set into the pump.**

## Programming and Using the Pump

### Turn on the pump

Press and hold the **ON/ OFF** key for 1.5 seconds to turn the pump on. The display will show the last programmed rate.

ON/OFF

### To program the rate (how fast your pump runs)

Press the **RATE/DOSE** key to display "RATE" in the lower-left corner of the screen. Use the **+** and **-** keys to program the rate.

RATE/DOSE

+

-

### To program the dose (how much is to be fed)

Press the **RATE/DOSE** key to display "DOSE" in the lower-left corner of the screen. Use the **+** and **-** keys to program the dose.

RATE/DOSE

+

-

### To program an infinite dose (rate only setting)

Press the **RATE/DOSE** key twice to display "Dose" in the lower-left corner of the screen, and hold the **+** key until the displays reads INF.

RATE/DOSE

+

### Start the pump

Press the **RUN/PAUSE** key to start the pump.

RUN/PAUSE

### When feeding is complete

When feeding is complete, press the **ON/OFF** key for 1.5 seconds to turn the pump off.

ON/OFF

### To clear settings

Press the **CLEAR** key to reset the displayed value. Press and hold the **CLEAR** key for 3 seconds to reset rate, dose, feed interval, and volume delivered values at the same time.

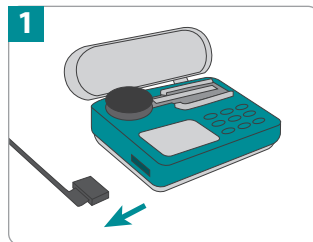
CLEAR

### View volume delivered

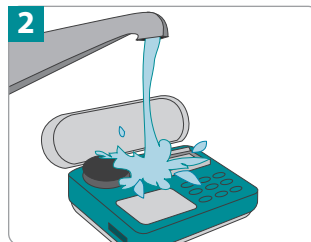
Press the **VOL/TOTAL** key once to display volume delivered for the current feeding. Press the key again to display the total cumulative volume delivered since the total volume was last reset.

VOL TOTAL

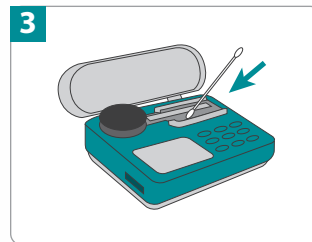
## Cleaning the Pump



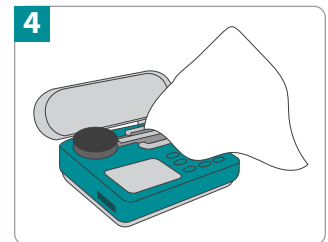
1 Unplug the Infinity AC Adapter/Charger from the pump, and turn the pump off.



2 Rinse the pump by holding it under a stream of warm water. Pump may also be cleaned with standard dish soap and a non-abrasive sponge or soft cloth.



3 Use a cotton swab to clean the pathways of cassette and to remove any residue on the pump wheel roller pins.



4 Dry with a clean cloth. Make sure the Infinity pump is completely dry before plugging into an electrical outlet.



Speak live with a Moog Clinical Representative for pump questions and troubleshooting guidance 24 hours per day, 7 days per week.

Clinical & Customer Support **800.970.2337**  
Visit [infinityfeedingpump.com](http://infinityfeedingpump.com) for additional information

Infinity® is a registered trademark of Zevox, Inc.  
Moog® is a registered trademark of Moog, Inc.  
© 2020 Moog, Inc. Moog Medical, 4314 Zevox Park Lane,  
Salt Lake City, UT 84123 USA. LS-80537 Rev. B

**MOOG®**  
Enhancing Healthcare.  
Enriching Lives.™