

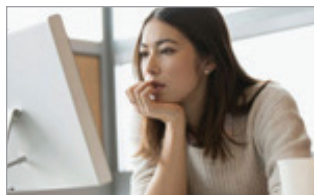


We are committed to providing the best support and training materials to our patients and their caregivers. The information below highlights the various virtual resources that you can use to find answers to questions and learn how to better use CURLIN Ambulatory Infusion Pumps. Please visit curlinpump.com for additional information.



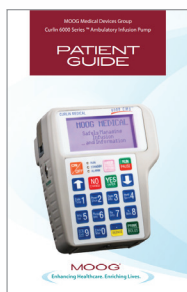
Virtual Training Pump

Access the virtual CURLIN 6000 pump via tablet or computer to learn the basics. [Click to go to the virtual pump.](#)



Patient Videos

Videos to help patients learn how to setup, program, clean, and troubleshooting the CURLIN 6000 pump. [Click to go to the videos.](#)



Patient Guide Booklet

PDF download designed to help patients understand the basics of CURLIN 6000 pump operation including battery changes, loading the set, priming the pump, and more.

- [Patient Guide Booklet \(English\)](#)
- [Patient Guide Booklet \(Spanish\)](#)

Homecare Provider:

Homecare Provider Telephone Number:

Homecare Provider Website:

My Representative:

My Representative's Telephone Number:

Additional Notes:



Speak live with a Moog Clinical Representative for pump questions and troubleshooting guidance 24 hours per day, 7 days per week.

Clinical & Customer Support **800.970.2337**
Visit infinityfeedingpump.com for additional information

CURLIN[®] is a registered trademarks of Curlin, Inc.
Moog[®] is a registered trademark of Moog, Inc. © 2020
Moog, Inc. Moog Medical, 4314 Zevex Park Lane,
Salt Lake City, UT 84123 USA. MD-80936 Rev. A

