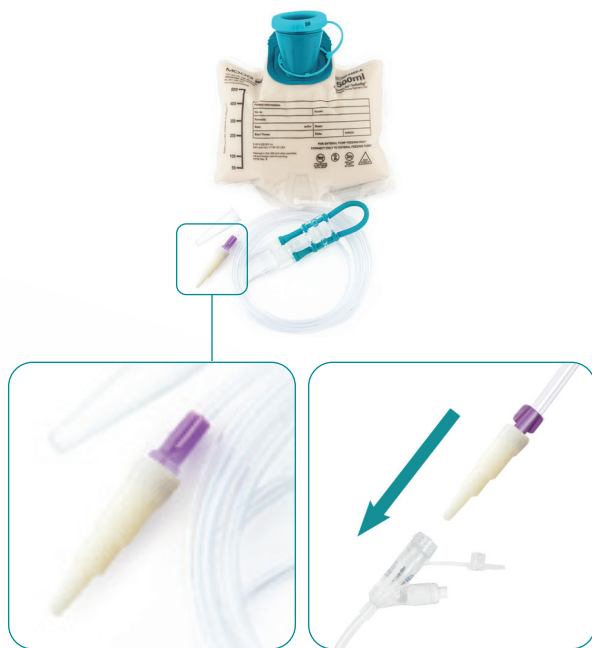




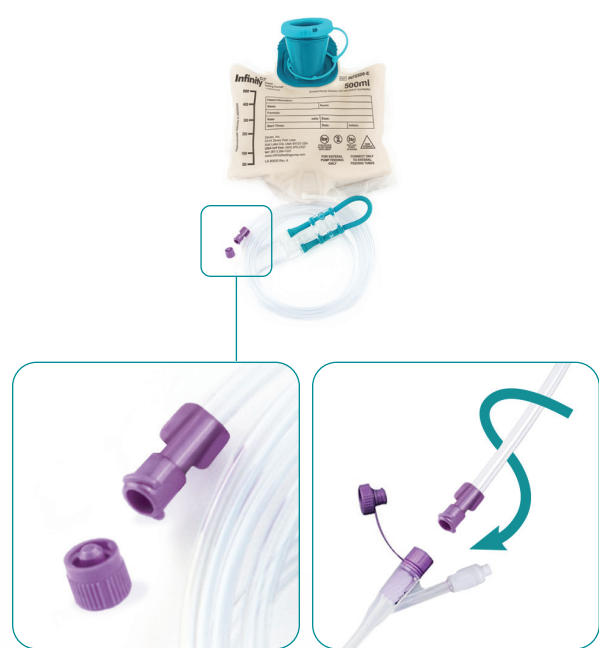
Infinity is happy to introduce a NEW 500 mL enteral bag set for use with the Infinity Enteral Feeding Pump. This new set, order code **INF0500-E**, comes with **ONLY** the ENFit connector and is specifically for use with ENFit-compatible enteral feeding tubes. The current 500 mL enteral bag set, order code **INF0500-A**, is still available for purchase and will continue to include the ENFit connector system **AND** transitional stepped connector.



EXISTING **INF0500-A**

500 mL Enteral Pump Deliver Set with ENFit Connector System and Transitional Stepped Connector

Unit of Measure: Case
Quantity/Case: 30 each



NEW **INF0500-E**

500 mL Enteral Pump Delivery Set with ENFit Connector

Unit of Measure: Case
Quantity/Case: 30 each



Speak live with a Moog Clinical Representative for pump questions and troubleshooting guidance 24 hours per day, 7 days per week.

Clinical & Customer Support 800.970.2337
Visit infinityfeedingpump.com for additional information

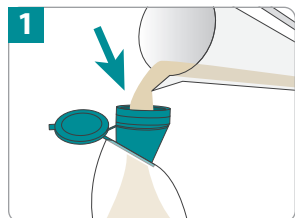
ENFit[®] is a registered trademark of GEDSA.
Infinity[®] is a registered trademark of Zevox, Inc.
Moog[®] is a registered trademark of Moog, Inc.
© 2020 Moog, Inc. Moog Medical, 4314 Zevox Park Lane,
Salt Lake City, UT 84123 USA. LS-81004 Rev. A

MOOG[®]
Enhancing Healthcare.
Enriching Lives.[™]

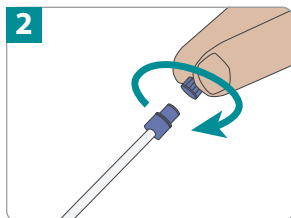
Quick Reference Instructions for INF0500-E

These instructions are not a substitute for the Instructions for Use. Be sure to read the INF0500-E Instructions for Use and Infinity Enteral Feeding Pump Operator's Manual thoroughly prior to operating the pump.

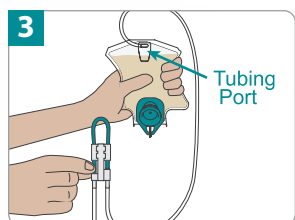
If using a backpack



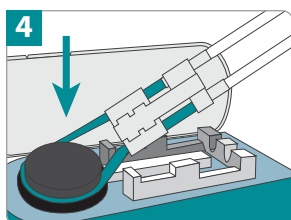
Hold the bag's funnel upright and pour in feeding formula. Close cap tightly.



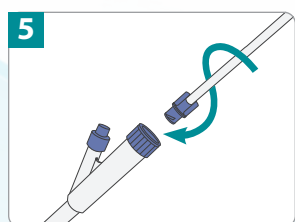
Unscrew the protective cover counterclockwise from the ENFit connector.



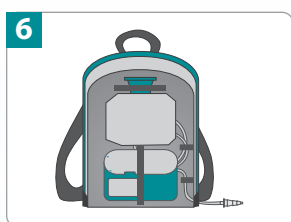
Prime the set manually and remove air by turning the bag upside down and tilting the bag to keep air at tubing port. Gently pinch teal colored tubing below the "D" symbol. While pinching, gently squeeze the bag at the same time to assist fluid flow. Hold this position until formula reaches the feeding tube connector.



Loop the silicone tubing around the pump wheel stretching lightly. Seat cassette into the pump and close the door.

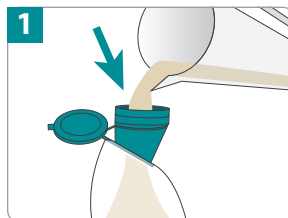


Screw the ENFit connector clockwise into feeding tube firmly by hand. Be careful not to overtighten.

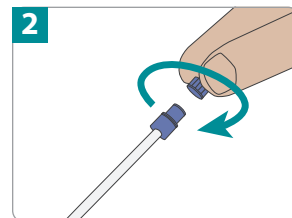


Place the pump into the backpack and secure with straps.

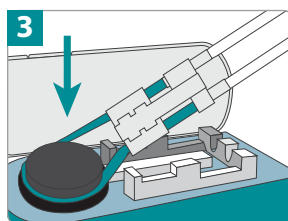
If using an IV pole



Hold the bag's funnel upright and pour in feeding formula. Close cap tightly and hang bag.

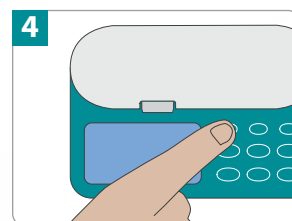


Unscrew the protective cover counterclockwise from the ENFit connector.

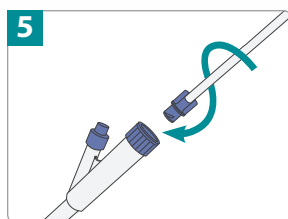


If manually priming, skip to step 6. If using the pump to prime, continue through step 5.

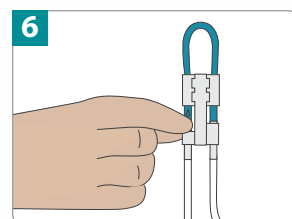
Loop the silicone tubing around the pump wheel stretching lightly. Seat cassette into the pump and close the door.



Turn pump on by pressing and holding the **ON/OFF** key until the pump beeps. Then, press and hold the **PRIME** key until formula reaches the feeding tube connector.



Screw the ENFit connector clockwise into feeding tube firmly by hand. Be careful not to overtighten.



To manually prime, gently pinch teal colored tubing below the "D" symbol. While pinching, gently squeeze the bag at the same time to assist fluid flow. Hold this position until formula reaches the feeding tube connector.

When primed, refer to steps 3 and 4 to load the set into the pump and connect set to the feeding tube.



Speak live with a Moog Clinical Representative for pump questions and troubleshooting guidance 24 hours per day, 7 days per week.

Clinical & Customer Support **800.970.2337**

Visit infinityfeedingpump.com for additional information