

1200ml Gravity Enteral Delivery Set with ENFit® Connector

INSTRUCTIONS FOR USE: To ensure proper operation of the delivery set, please follow all instructions and illustrations below.

1. Close roller clamp (image A).
2. Fill feeding bag to desired level and close cap.
3. Hang bag on IV pole with built-in hanger on bag (image B).
4. Unscrew the protective cover counterclockwise from the ENFit connector (image C).

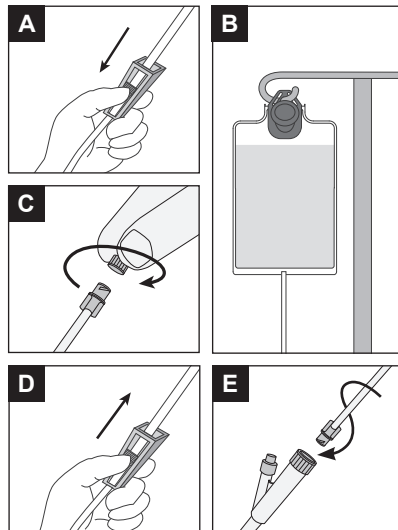
5. Open roller clamp and fill set to expel air in tubing (image D). Close roller clamp.

NOTE: Do not overfill drip chamber.

6. Screw the ENFit connector clockwise into feeding tube firmly by hand (image E). Be careful not to overtighten.

7. Adjust roller clamp until the desired flow rate is achieved.

NOTE: Drip chamber will produce approximately 30 drops/ml.



GRAVITY FEED ONLY

WARNINGS AND PRECAUTIONS

- Follow manufacturer guidelines related to maximum nutrition hang time.
- Device contains small parts. Dispose of or store connector cap when not in use to avoid choking hazard for children under 3 years.
- Avoid leaving tubing and cords where infants, children, or those deemed at high risk for medical line entanglement, can become entangled. Be aware that if these items become wrapped around a patient's neck, there is an increased risk of strangulation or death. Caregivers of patients who are at risk for entanglement should discuss with their health care provider how to properly manage their lines and properly monitor patients based on their needs while in use.

⚠ WARNING: This product can expose you to chemicals including vinyl chloride, which is known to the State of California to cause cancer. For more information go to www.P65Warnings.ca.gov.



THIS DEVICE IS NOT MADE WITH DEHP



REPLACE EVERY 24 HOURS



NOT FOR IV USE



THE INFINITY DELIVERY SET IS INTENDED TO CONNECT TO ENTERAL FEEDING TUBES

NOT MANUFACTURED WITH NATURAL RUBBER LATEX

DELIVERY SETS ARE MADE WITH MATERIALS THAT DO NOT CONTAIN BISPHENOL A (BPA) IN THE FLUID PATH.