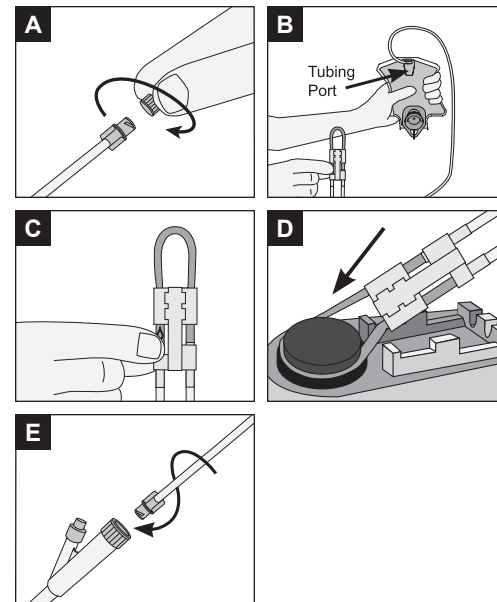


100ml Enteral Pump Delivery Set with ENFit[®] Connector

Use INF0100-E with Infinity Orange Enteral Feeding Pump Only.

INSTRUCTIONS FOR USE: To ensure proper operation of the delivery set, please follow all instructions and illustrations below.

1. Fill feeding bag to desired level and close cap securely.
2. Unscrew the protective cover counterclockwise from the ENFit connector (image A).
Note: If set is to be used with a carry pack, all air must be removed from the bag and tubing. **Continue to step #3 for instructions on removing the air.** If set is to be hung above pump, i.e. on an IV pole, air may remain in bag. **Skip to step #4.**
3. Turn bag upside down and gently squeeze. Tilt bag to keep air at the tubing port (image B). At the same time, follow the instructions in step #4.
4. Gently pinch the orange colored tubing **below** the “Δ” symbol (image C). Hold this position until air is expelled from tubing. Gently squeeze bag at the same time to assist fluid flow. If fluid does not flow, pinch may be too tight.
5. To expel air from tube using pump prime feature, refer to pump and Operator’s Manual for instructions.
Note: Priming with the pump is recommended when using thick formulas because it is faster than priming by gravity.
6. Position silicone tubing around pump wheel stretching lightly. Seat cassette into the pump (image D). Close pump door.
7. Screw the ENFit connector clockwise into feeding tube firmly by hand (image E). Be careful not to overtighten.



WARNINGS AND PRECAUTIONS

- Use of INF0100-E in the Infinity[®] pump may result in frequent alarms and/or inaccurate fluid delivery
- It is important to keep the air sensor free of debris including spilled fluids or food that may adhere to the sensor and prevent detection of air in the tubing. Use a cotton swab to clean the pathways of the cassette receptacle. (Refer to the pump Operator’s Manual for further cleaning instructions).
- When using a programmed dose, infinite dose or interval feeding setting, the volume of food in the bag/bottle should be monitored throughout the feeding cycle to ensure the appropriate dose has been received by the patient.
- Follow manufacturer guidelines related to maximum nutrition hang time.
- Device contains small parts. Dispose of or store connector cap when not in use to avoid choking hazard for children under 3 years.
- Avoid leaving tubing and cords where infants, children, or those deemed at high risk for medical line entanglement, can become entangled. Be aware that if these items become wrapped around a patient’s neck, there is an increased risk of strangulation or death. Caregivers of patients who are at risk for entanglement should discuss with their health care provider how to properly manage their lines and properly monitor patients based on their needs while in use.

⚠ WARNING: This product can expose you to chemicals including vinyl chloride, which is known to the State of California to cause cancer. For more information go to www.P65Warnings.ca.gov.



THIS DEVICE
IS NOT MADE
WITH DEHP



REPLACE
EVERY
24 HOURS



NOT FOR
IV USE



Rx
ONLY

THE INFINITY DELIVERY
SET IS INTENDED TO
CONNECT TO ENTERAL
FEEDING TUBES

NOT
MANUFACTURED
WITH NATURAL
RUBBER LATEX

DELIVERY SETS ARE
MADE WITH MATERIALS
THAT DO NOT CONTAIN
BISPHENOL A (BPA)
IN THE FLUID PATH.