

Screw Cap Enteral Pump Delivery Set with ENFit[®] Connector

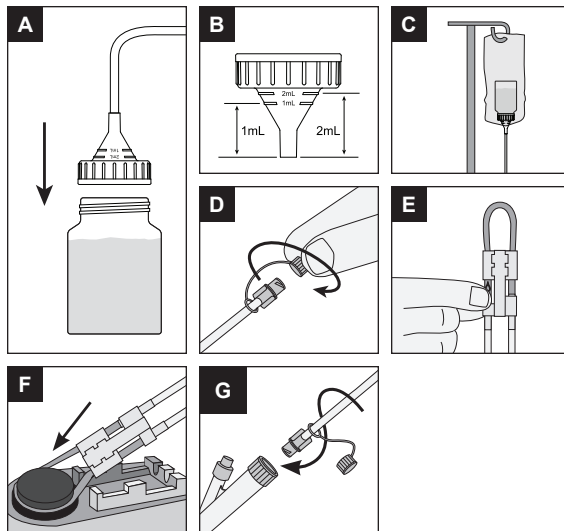
Use INFOCAP-E with Infinity Orange Enteral Feeding Pump only

INSTRUCTIONS FOR USE: To ensure proper operation of the delivery set, please follow all instructions and illustrations below.

- Fill a feeding bottle/container with a 40mm opening and secure to the Infinity Orange screw cap (image A).

Note: The screw cap includes 1mL and 2mL graduation markings on the funnel. These markings indicate an approximate volume in the screw cap; they do not include volume in the tubing (image B).
- Invert bottle/container, place it in the suspension bag and secure to an IV pole (image C).
- Unscrew the protective cover counterclockwise from the ENFit connector (image D).
- Gently pinch the orange colored tubing **below** the "O" symbol (image E). Hold this position until air is expelled from tubing. If fluid does not flow, pinch may be too tight.
- To expel air from tube using pump prime feature, refer to pump and Operator's Manual for instructions.

Note: Priming with the pump is recommended when using thick formulas because it is faster than priming by gravity.
- Position silicone tubing around pump wheel stretching lightly. Seat cassette into the pump (image F). Close pump door.
- Srew the ENFit connector clockwise into feeding tube Be careful not to overtighten.



WARNINGS AND PRECAUTIONS

- Use of INFOCAP-E in the Infinity[®] pump may result in frequent alarms and/or inaccurate fluid delivery.
- Device contains small parts. Dispose of or store connector cap when not in use to avoid choking hazard for children under 3 years.
- Avoid leaving tubing and cords where infants, children, or those deemed at high risk for medical line entanglement, can become entangled. Be aware that if these items become wrapped around a patient's neck, there is an increased risk of strangulation or death. Caregivers of patients who are at risk for entanglement should discuss with their health care provider how to properly manage their lines and properly monitor patients based on their needs while in use.

WARNING: This product can expose you to chemicals including vinyl chloride, which is known to the State of California to cause cancer. For more information go to www.P65Warnings.ca.gov.



THIS DEVICE
IS NOT MADE
WITH DEHP



REPLACE
EVERY
24 HOURS



NOT FOR
IV USE



THE INFINITY DELIVERY
SET IS INTENDED TO
CONNECT TO ENTERAL
FEEDING TUBES

NOT
MANUFACTURED
WITH NATURAL
RUBBER LATEX

DELIVERY SETS ARE
MADE WITH MATERIALS
THAT DO NOT CONTAIN
BISPHENOL A (BPA)
IN THE FLUID PATH.